

Pyramid Model
Promoting the social and emotional well-being of infants and young children

—
❧
—

State leadership team meeting
January 12th, 2017

Today:

—
❧
—

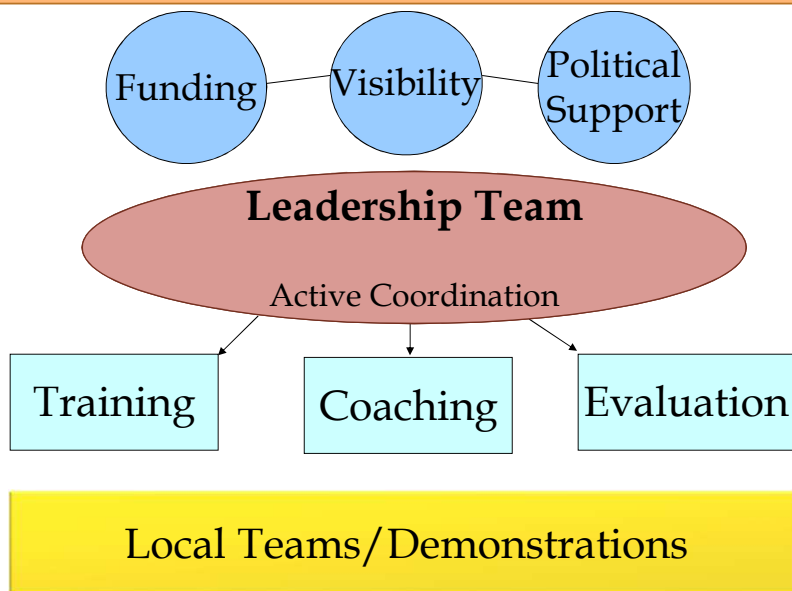
- ❧ Introductions/Check in
- ❧ SLT membership: *“When you change who is at the table you change the table”*
- ❧ 2016 highlights: *PM coordinators and SLT members share*
- ❧ Pyramid Model training updates and discussion
- ❧ Pyramid Model sustainability: As a member of the State Leadership Team what is your vision for the Pyramid Model and how can we make it happen?
- ❧ Setting Priorities for 2017
- ❧ Meeting evaluation

Objectives



- ☞ To discuss membership of the Pyramid Model State Leadership team
- ☞ To highlight Pyramid Model accomplishments and implementation efforts in 2016
- ☞ To hear updates and provide guidance on the Pyramid Model training opportunities
- ☞ To discuss SLT members vision for the future and sustainability of the effort

Pyramid Model Implementation Logic



Leadership team members/systems

- ❧ Early Care and Education
- ❧ Head Start/Early Head Start
- ❧ Part C
- ❧ Part B
- ❧ Infant Mental Health
- ❧ Home Visiting
- ❧ Higher Education
- ❧ External Coaches
- ❧ PBIS
- ❧ Child Abuse Prevention
- ❧ **WHO ELSE?**

SLT members' Roles and Responsibilities

- ❧ Attend and actively participate in the quarterly state leadership team meetings
- ❧ Disseminate information to the constituents you represent
- ❧ Bring information from your constituents to the leadership team
- ❧ Present Pyramid Model overview to various constituent groups (using developed materials)
- ❧ Seek funding to support implementation of the Pyramid Model in WI

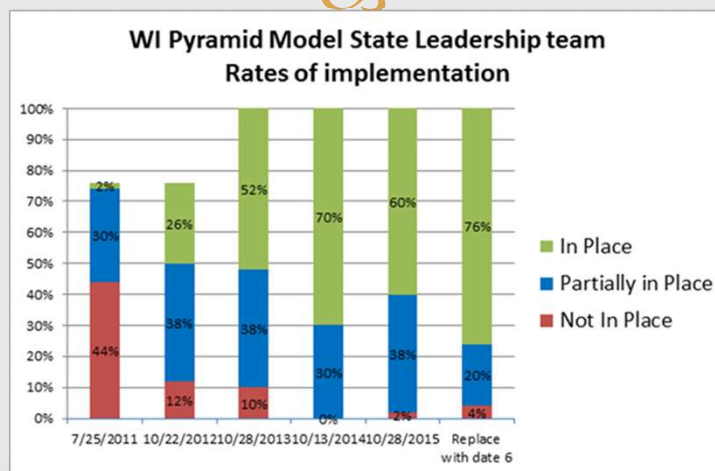
The Purpose of the Pyramid Model for Social and Emotional Competence State Leadership Team is to:



- ❧ develop and sustain infrastructure to support program wide implementation;
- ❧ disseminate information about the Pyramid Model;
- ❧ provide capacity for professional development to cross systems professionals in evidence based practices;
- ❧ develop processes and systems for data based decision making

*All to ensure social and emotional well-being of
infants, young children and their families*

State level implementation: Benchmarks of Quality



SLT evaluation cumulative results



SLT evaluation criteria The evaluation is based on a 1-5 rating scale: 1 = low; 5 = high	2013	2014	2015	2016
Degree to which the meeting objectives were achieved:	4.12	4.67	4.29	4.67
Facilitation of the meeting was:	4.63	4.67	4.90	4.67
I would rate my own contribution as:	3.71	4.01	3.50	3.83
Degree to which I think this meeting contributed toward achieving our purpose:	4.54	4.60	4.60	4.75

2016 Highlights

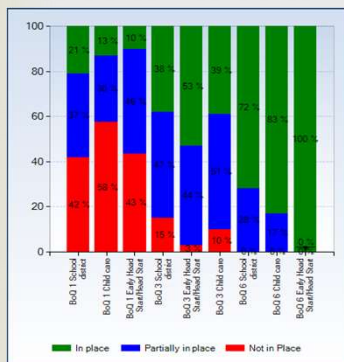


Implementing Pyramid Model with fidelity

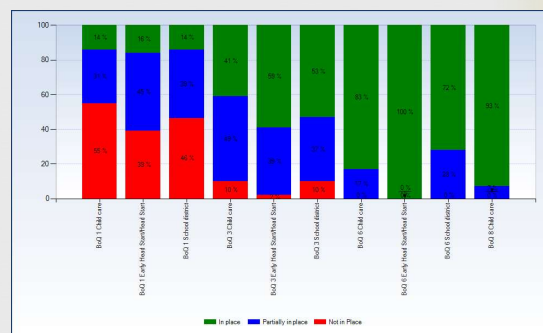
- ☞ Hosted two Implementation Academies (cohorts 8 and 9):
 - ☞ Neenah - April 2016
 - ☞ Waupaca - October 2016
- ☞ Facilitated two strategic planning meetings with external coaches
- ☞ Continued work to update/upgrade the program-level data system

Program-level data

2015



2016



Pyramid Model Implementation Effectiveness



- ❧ 3rd party evaluation by Dr. Christine Neddenriep, UW-Whitewater



- ❧ Results presented at the Early Childhood Advisory Council
- ❧ Follow up meetings are being scheduled

Supporting Families



- ❧ Facilitated roll-out of the WI Positive Solutions for Families
- ❧ Provide support and mentoring for 8 communities around the state to implement Parents Interacting with Infants (PIWI) Groups
- ❧ Received **723** surveys from families whose children attend program-wide implementation programs (in 2015: 463 surveys were received)

National Spotlight



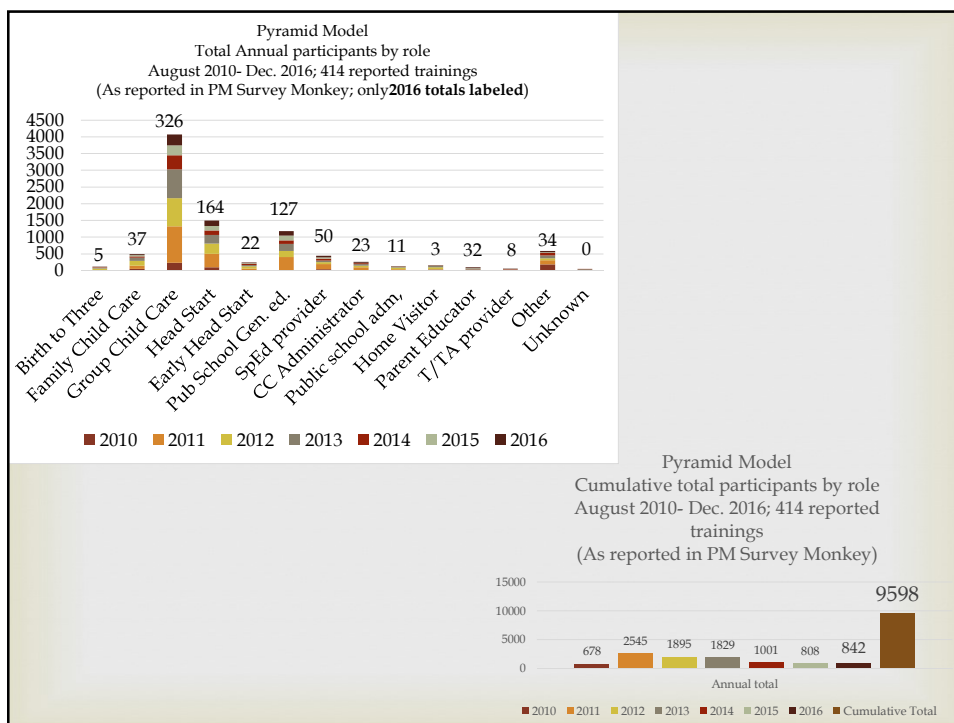
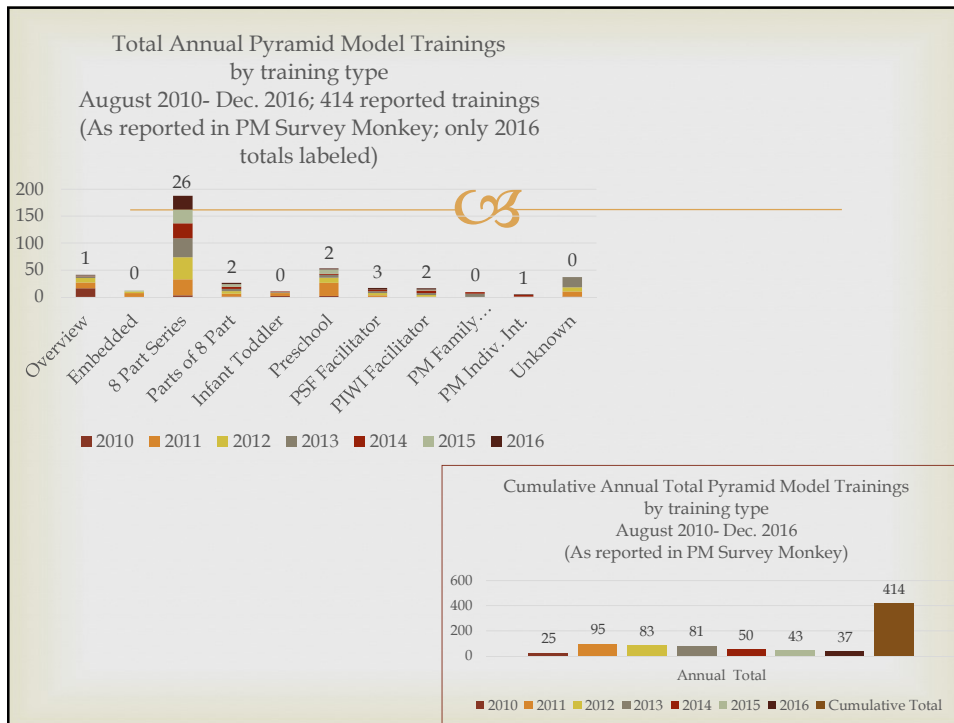
- ❧ Julie and Lana are invited to facilitate a session on implementation at the National Training Institute
- ❧ Lana and Staci are invited to present a session on PIWI at the National Training Institute
- ❧ Julie selected to serve on the Board of Directors for the Pyramid Model Consortium

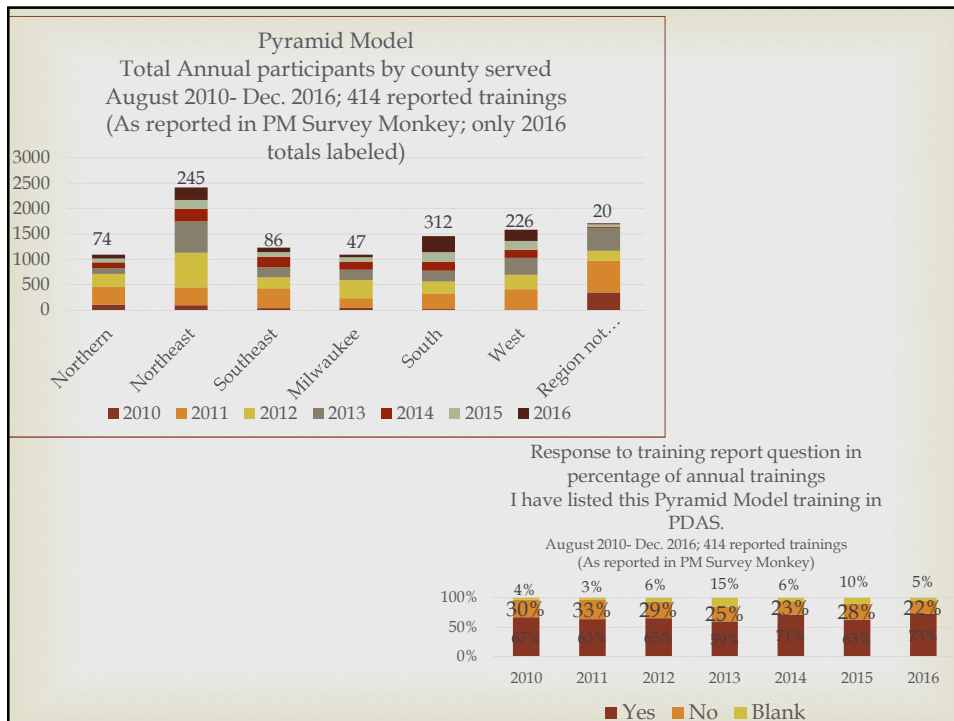
January 2017 Pyramid Model training data



Trainings completed by Dec. 31, 2016

Report compiled with data entered in the
Pyramid Model Training Survey Monkey site
Data amended 1/17/17 - removed IHE totals
until data can be compared with other sources





Supporting Infant/Toddler workforce

Ω

Save the Date!



Pyramid Model Infant/Toddler Training Modules

A Train the Trainers Event – More Details Coming Soon!



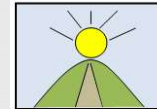
When: May 24th and 25th, 2017

Where: Holiday Inn Convention Center, Stevens Point

Sustainability: your vision



- ☞ In pairs, please share with one another: **As a member of the State Leadership Team what is your vision for the Pyramid Model and how can we make it happen?**
- ☞ Join the next pair, have your partner share your vision and be ready to share your partner's



Vision

SLT meeting dates in 2017



- ☞ **April 20th**
- ☞ **July: 20th**
- ☞ **October 26th**

Thursdays at the GHC East
12:30 to 3:00 PM

Thank you!