

# *Child Find Ideas That Work!*



*Diane Fett, M.Ed.*

*State of Wisconsin*

*Mentor Project*

**2011**

# *Where to begin*

---

- “Begin with the end in mind”

*Stephen R. Covey, Author, The Seven Habits  
of Highly Effective People*

IDEA requires early identification

What is the goal?

Who is responsible?

What difference does it make?

# *Take the First Step*

---

- **Start wherever you are!**
  - **Consider your strengths**
  - **Assess your weaknesses**
  - **Fill in the gaps**
  - **Always look for what is missing**
  - **Always think about who is missing**

# *Leadership*

---

**Someone has to do it or it won't get done!**

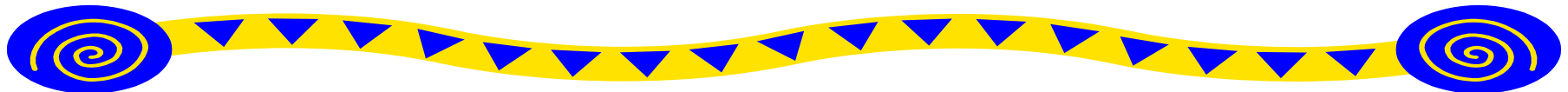
- Who is doing what already?
- Surround yourself with support
- Find a place to meet that is centrally located
- Remember the 3 F's
  - Food, fun, free!
- Pick a convenient time
- Meet only as often as necessary

# *Who?*

---

**Anyone in your community with an interest in children with developmental concerns!**

- **Education**
- **Child Care**
- **Health**
- **Community Programs**
- **Agencies**



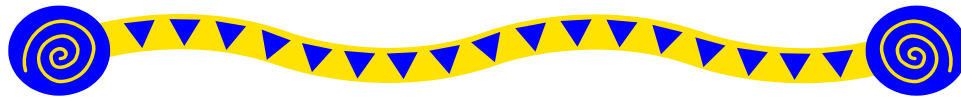
# *Build a Network*

---

- **Parents**
- **Physicians**
- **Child Care Workers**
- **Head Start**
- **Neo-natal Intensive Care Units**
- **Social Services**
- **Housing, including Shelters**
- **Domestic Violence Services**
- **Law Enforcement**
- **Child Welfare**
- **Mental Health**
- **Obstetricians**
- **WIC**
- **Public Health**
- **Schools**
- **Family Resources Centers**
- **Katie Beckett**
- **Children and Youth with Special Health Care Needs**
- **Education**
- **Others?**

# *Developing an Interagency Coordinating Council*

---



- ❑ What do you want to accomplish?
- ❑ Who are your partners?
- ❑ What will be your purpose?
- ❑ Is there anyone else who needs a Council?

# *Provide Opportunities*

---

- To share information
- To network with colleagues
- To develop resources
- To coordinate efforts
- To work smarter, not harder

“To support the special needs of young children and their families in our community”



# *Make it Meaningful, They Will Come*

---

- **Create an agenda that requires participation of ALL members**
- **Choose topics that are of interest to ALL members**
- **Choose a time that is possible**
- **Choose a place that is accessible**
- **Choose a location that is convenient**

# *Topics of mutual interest...*

---

Some ideas...

- **Parent Support Activities**
- **Child Find Efforts**
- **Screening**
- **Child Development Days**
- **Joint Training**
- **Collaboration**
- **Transition**
- **Social and Emotional Development**

# *Sustaining Effort...*

---

- **Keep them coming back!**
  - **Meet only often enough to be meaningful**
  - **Don't create unnecessary work or committees**
  - **Find a way for each member to actively participate**
  - **Find a way for each member to actively benefit**
  - **Provide opportunity for informal networking**

# *Get the Word Out! Advertise!*

---

- Look for places that pack a punch and get the most bang for the buck!
  - Local Newspapers
  - School Newsletters/Websites
  - Community Newsletters/Websites
  - Libraries
  - Child Care Center Newsletters/Websites
  - Bulletin Boards
  - Grocery Stores
  - Village Halls

# Sample Ad...

Section A, Page 20 • ACTION SUNDAY, May 2, 2010



## choose healthy child care

### EARLY EDUCATION

#### Children's Choice

Discover these Learning Centers in welcoming and fun settings to ensure each child's best start in life!

Our carefully designed centers for children ages 3 weeks through 5 years are available in the community. We give you the advantage we give our children.

371 East Hill Street  
Ft. Lauderdale, FL 33301  
(954) 525-4400  
All Day, Open Year

### Kindermusik

#### Early Childhood Music & Movement Summer 2010 Program

• 4-6 weeks, 10:00 a.m. - 11:00 a.m.  
• Ages 18 months - 5 years  
• Includes music, movement, and language activities  
• Includes parent/teacher materials  
• Includes a CD  
• Includes a certificate of completion  
• Includes a certificate of appreciation  
• Includes a certificate of participation  
• Includes a certificate of achievement  
• Includes a certificate of excellence  
• Includes a certificate of honor  
• Includes a certificate of distinction  
• Includes a certificate of mastery  
• Includes a certificate of proficiency  
• Includes a certificate of expertise  
• Includes a certificate of mastery  
• Includes a certificate of proficiency  
• Includes a certificate of expertise

### Piano Lesso

Teaching ages 3 and up  
Lessons available at my private studio and many local child care centers

**Beth Givry**  
4270224@comcast.net  
954-976-0229 • pianolearningteacher@aol.com  
Visit us on Facebook at PianoLessoFL

### Jesus' Little Lambs Child Care Center

We insist on care that will last a lifetime.

- Summer & Fall School-Age Program
- Full & Part-time Child Care 3 weeks - 52 weeks
- 4 & 4 year preschool Sept. - May
- 5:30 a.m. - 6:00 p.m. Monday - Friday

Call (954) 924-0818 for more info!

### HAVE FUN AT PRE-SCHOOL

We have openings for Fall Pre-School Classes!

3 YEAR OLD Tues, Wed, & Thurs. 9:15-11:30am. \$60/mo.  
3 YEAR OLD Tues & Thurs. 9:15-11:30am. \$60/mo.

Call Today - Classes Fill Quickly!  
Drop & visit our facilities anytime.

**CAMELOT CHILDREN'S CENTER**  
101 Camelot Drive, FDL  
Call 920.922.9442

### Best Buddies

183 W. SCOTT STREET, FDL • 922-4660

- Fun for both 5 weeks
- Professionally staffed
- Family-oriented atmosphere
- Open Monday-Friday 6:00am-5:30pm

### Birth to 3

Are you the parent of a child under 3?

Do you have concerns about your child's development? To make a referral, request a free screening or for more information call Fond du Lac County's Children's Services Referral Line at 920-929-3919

*Because the first three years build a lifetime*

### The Kids Connection Learning Center

Ages 6 Weeks to 11 Years  
Open Tues - Thurs

- In-home daycare license
- Indoor large play area
- Multiple classrooms
- Increased 2 or more FT children
- Full & part-time school transport

609 Thomas St., Fond du Lac - (contact listed above)  
906-9669

### Kidz Choice

(for mom's and dad's too)  
Learning Center, LLC.

ON PRIME ROAD FOND DU LAC  
We provide high quality care for children ages 3 weeks to 5 years.  
Transportation is provided to and from school.  
924-3593 • www.kidzchoicelearningcenter.com

### Little Pianoes

St. Paul's Lutheran  
1800 W. 1st St., Fond du Lac, WI 53408  
920-929-3919

### HEADSTART

ACCEPTING OPEN ENROLLMENT NOW!

4-YEAR-OLD ENROLLMENT NOW!

A Christian Pre-K/Kindergarten Program for 2 & 3 year old children

1919 Adams Ave., North Fond du Lac, WI 53408

### Play House 4 The Precious

Ages 6 Weeks to 12 Years  
Monday-Friday 7:30 am - 5:30 pm  
Sat. 9:30 am - 4:00 pm  
\*Under 2 / Full Day: \$150/Wk.

Do you need full day/weekend care?  
Please call us for an application  
920-924-9888  
2810 West Hill Road, Ft. Lauderdale, FL 33309

Come Try our facility which includes a gym, media center, and security locked entrance!

### Mary Linsmecker School & Pre-K/Day Preschool

121 W. Green Street • Fond du Lac, WI 53408  
920-929-3919

# Birth to 3

Wisconsin's Early Intervention Program

## Are you the parent of a child under 3?



Do you have concerns about your child's development? To make a referral, request a free screening or for more information call Fond du Lac County's Children's Services Referral Line at

## 920-929-3919

*Because the first three years build a lifetime*

# *Find a Champion...*

---

- Identify a physician to serve as a liaison between County Birth to 3 Program and local physicians.
  - To provide information on making referrals to other physicians
  - To provide information about the process
  - To provide information about the program
  - To provide feedback to the program
  - To strengthen the relationship between the Program and Physicians
  - To identify and ameliorate gaps

# *Physician Outreach...*

---

## □ **Physician Packets**

- **Universal Referral Form**
- **Letter from Physician Liaison with personal message**
- **Include end of year data, including the number of referrals each physician has made**
- **Articles of interest specific to Physicians**
  - **Benefits of early intervention**
  - **Autism**
  - **Screening**

# *Using Data to Drive Decisions...*

---

- **Who makes referrals now?**
  - **Build on your existing network**
  - **Recruit Others**
  - **Seek out a Physician Liaison**
  - **Track referrals**
  - **Retrospective Reviews are helpful**



# *Put it in Writing*

---

## ■ Interagency Agreements

- Identify common focus of agreement so it is meaningful to both/all parties
- Create the agreement together so it really is an agreement
- Start small, dream big!
- Keep the agreement working (re-visioning)

# *What Information Do You Need?*

---

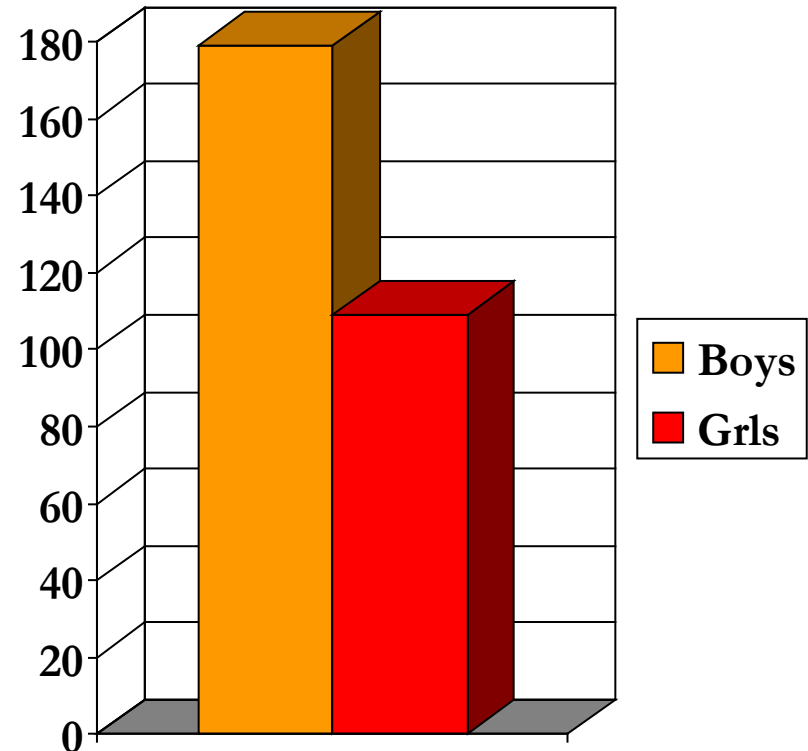
## ■ Track Data

- Number of Referrals
- Referral Sources
- Areas of Concern
- Total IFSP's for Service Coordinators/Providers
- Children under the age of one
- Children under the age of two
- Children under the age of three
- Total Evaluations

# *Making sense of the numbers...*

---

- **Fond du Lac County Birth to 3 Referral Information**
- **288 Children were referred in 2010**
- **179 Boys      109 Girls**



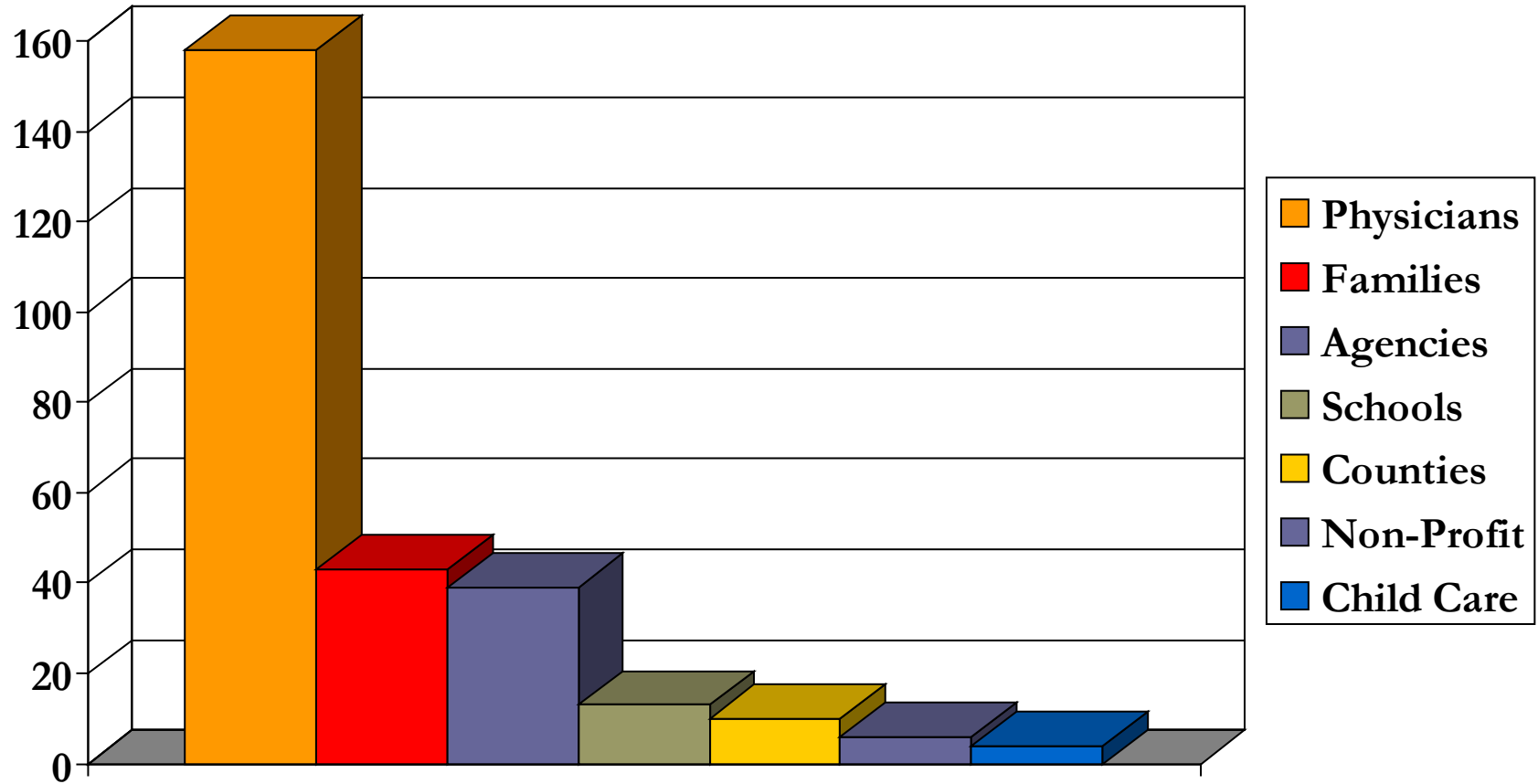
# Who makes referrals now?

---

- 158 referred by physicians
- 15 referred by hospitals
- 10 referred by other counties
- 39 referred by county agencies
- 6 referred by non-profit agencies
- 43 referred by family/friends
- 13 referred by school districts
- 4 referred by child care centers

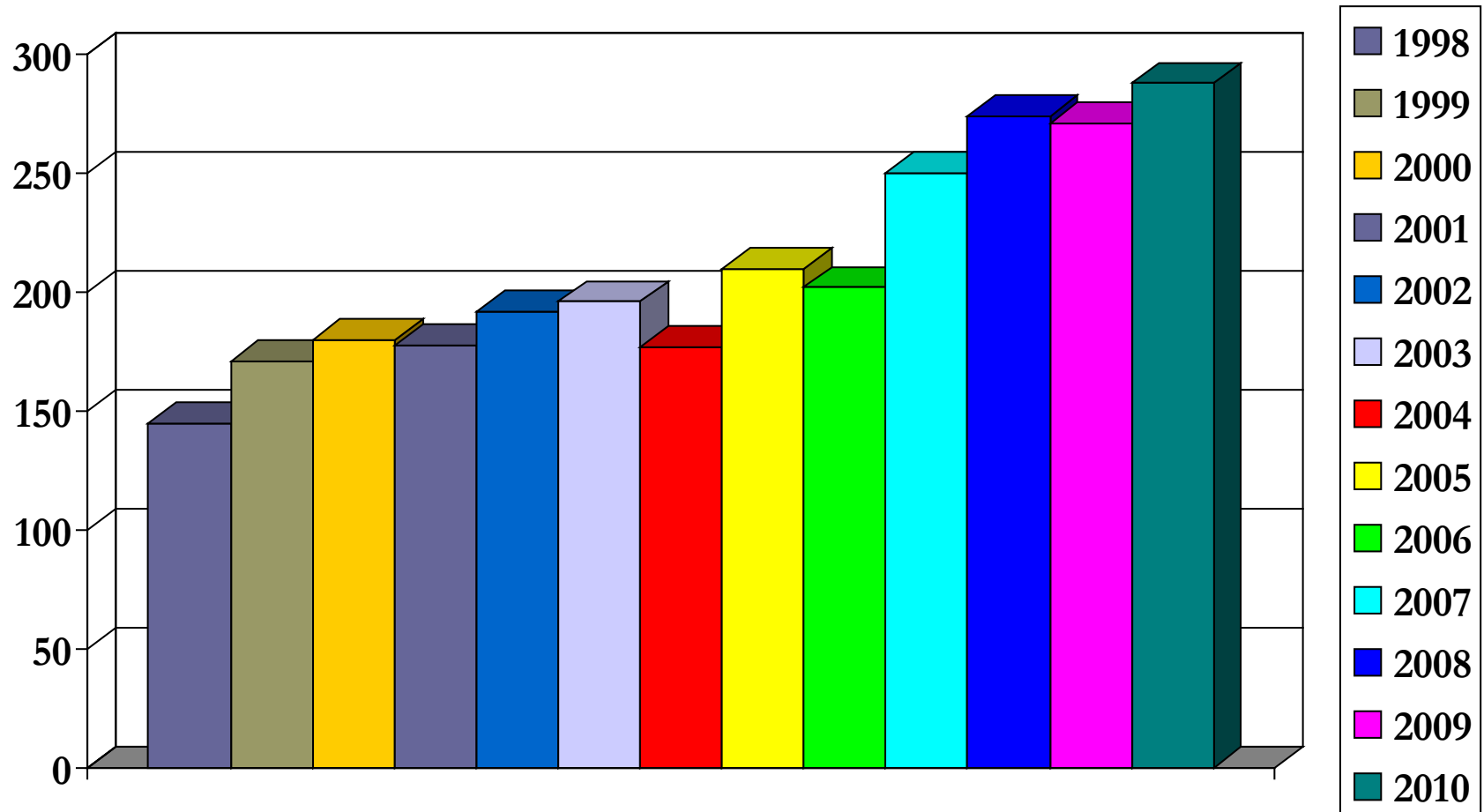
# *Referral Sources-2010*

---



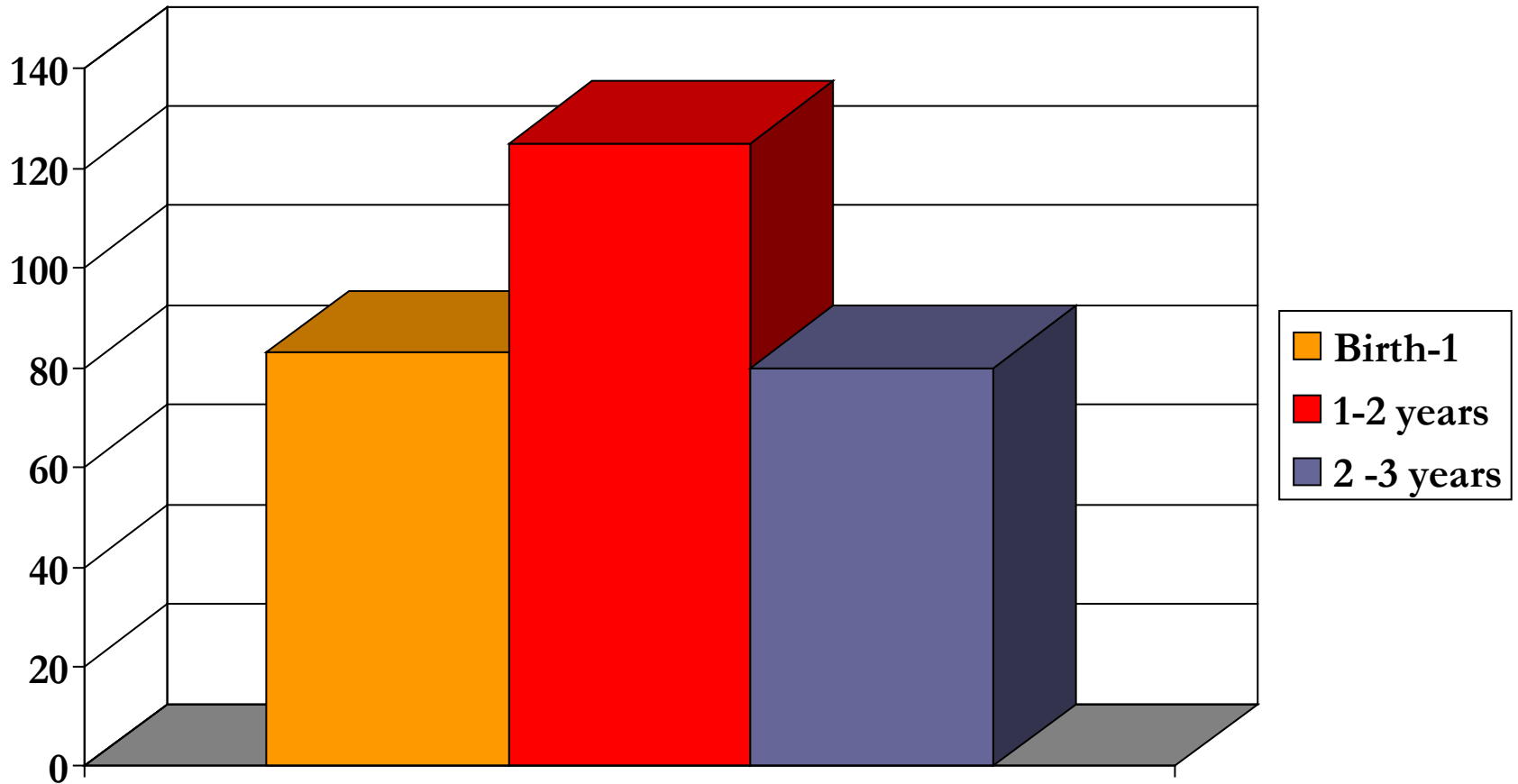
# Number of Referrals by year...

---



# Ages of Children Referred...

---



# *Breaking down the data...*

---

- ❑ Consider who is making referrals
- ❑ Consider who is **NOT** making referrals
- ❑ Consider where children live and if any gaps exist in reaching children in certain areas
- ❑ Consider the ages of the children referred and increasing efforts to identify children as early as possible
- ❑ Consider when referrals are being made and increase efforts when referrals are down
- ❑ Target child find efforts using data to drive decisions



# *Annual Reports...*

---

- **Community Stakeholders**
- **Grant Writing**
- **Board/Community Education**
- **Documents the importance of the work we do**